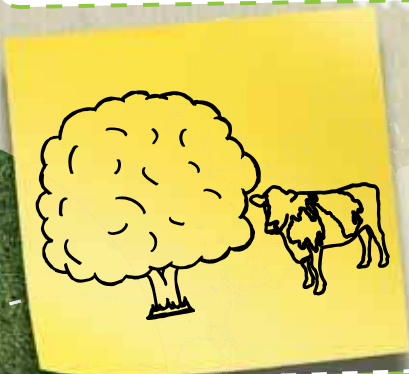


ENVIRONMENTAL & LAND BASED SECTOR

You could work in an area
of **natural beauty**



42%

(of workers in
the sector are
self employed)

On average you'll earn **£100**
more **a week** in this sector
than you would in the **retail,**
hotel or restaurant industries

You could **protect wildlife, grow the home turf of your**
football club or care for animals

From 2010 – 2020 lots more
workers will be needed in the sector:

40,000 people with **Level 1 Qualifications**
47,000 people with **Level 2 Qualifications**
44,000 people with **Level 3 Qualifications**
34,000 people with **Level 4 Qualifications**

£60,000 per year (Experienced farm managers earnings)

50,000

Almost 50,000 people
are employed in **veterinary**
activities in the **UK**



ENVIRONMENTAL & LAND BASED

Careers Insight

In this sector; you could be one of the lucky people who get to work outside. It's an exciting time to get involved, Britain is trying to produce more of its own food, fight climate change, and protect areas of natural beauty. There are lots of opportunities to make a difference to the planet, and future generations...

Horticulture & landscaping

This sub-sector is about creating and looking after designed landscapes in cities and the countryside. It covers work like maintaining sports turf, gardens, parks, golf courses and even business grounds.

Earnings: From £12,000 to £20,000 a year.

Agriculture

As the UK strives to increase its own food production opportunities are growing in this area. Agriculture covers work in farms, dairies and 'agribusinesses' - companies that supply the industry with things like animal feed, fertilisers and farm machinery.

Earnings: From £12,000 to £17,000 a year.

Animal care

From running a cattery to training horses, this career is for the animal lovers. Animal care is about handling, supervising and caring for animals, from small domestic pets to wildlife.

Earnings: From £11,000 to £13,000 a year for animal care. £14,000 to £22,000 for veterinary nurses.

Environmental conservation

This area is for people who are passionate about environmental issues. But it's not just about saving the planet – conservation is all about coming up with solutions that will lead to a more sustainable, healthy environment.

Earnings: From £15,000 to £20,000 a year.

Land-based engineering

These are the people who design, manufacture and maintain agricultural equipment, like combine harvesters and tractors: working for dealerships and manufacturers.

Earnings: From £20,000 to £26,000 a year.

GET QUALIFIED

There are plenty of vocational routes into this sector...

Apprenticeships

Apprenticeships are a great route into this sector. All of these are NVQ level 2:

- Agriculture • Animal Care • Environmental Conservation
- Equine • Fencing • Floristry
- Game and Wildlife Management • Horticulture
- Land-based Engineering • Trees and Timber
- Veterinary Nursing

Advanced Apprenticeship

You can also do an advanced Apprenticeship; all of these are NVQ level 3:

- Agriculture • Animal Care • Environmental Conservation
- Equine • Farriery • Floristry
- Game and Wildlife Management • Horticulture
- Land-based Engineering • Veterinary Nursing

A Levels

Here are some A Levels relevant to careers in this sector:

- Biology • Environmental Science • Geology

Foundation Degrees

A Foundation Degree is a university-level qualification that is equivalent to the first two years of an Honours Degree. They are different from Honours Degrees as they involve learning in the workplace as well as at university or college.

College Courses

A college course can also be a great route into this sector. To see which colleges have relevant courses in your region check out www.opendoorsmedia.co.uk.

USEFUL LINKS

www.opendoorsmedia.co.uk - The best careers site on the web.

www.lantra.co.uk - The Sector Skills Council for the industry.

www.careersbox.co.uk - Home to a fantastic library of free careers videos.